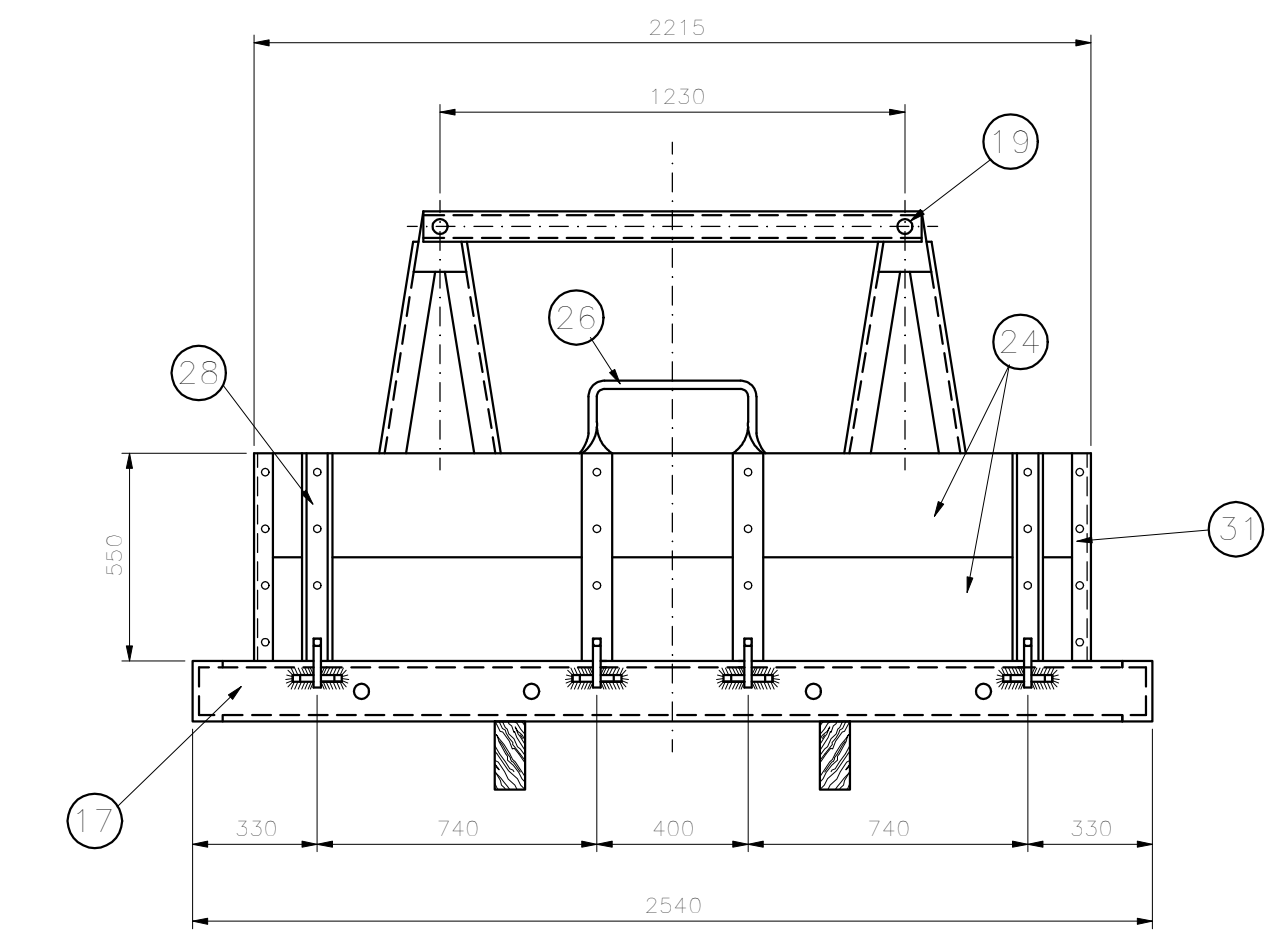
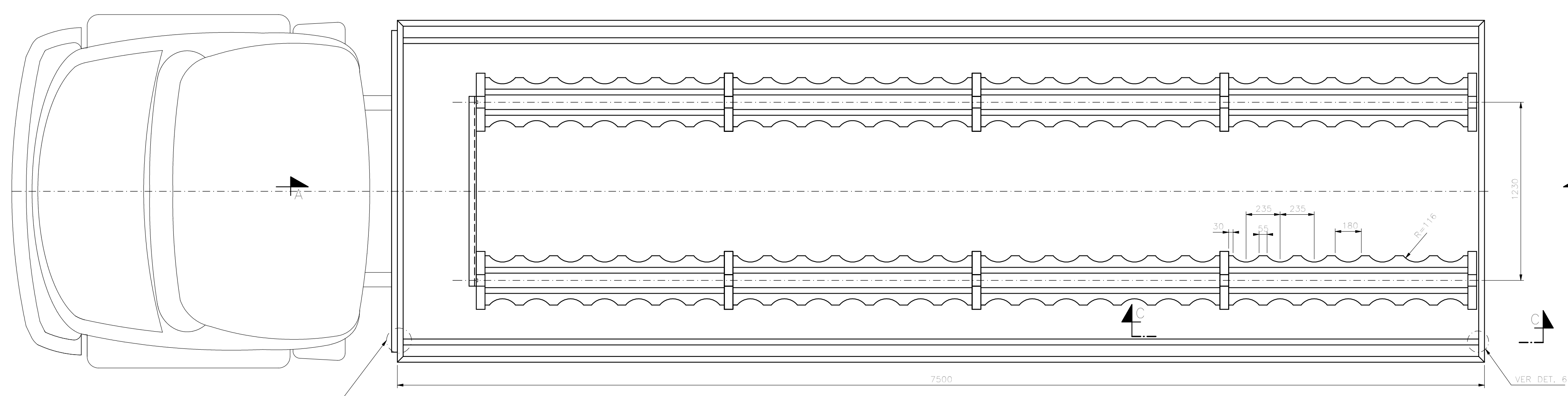


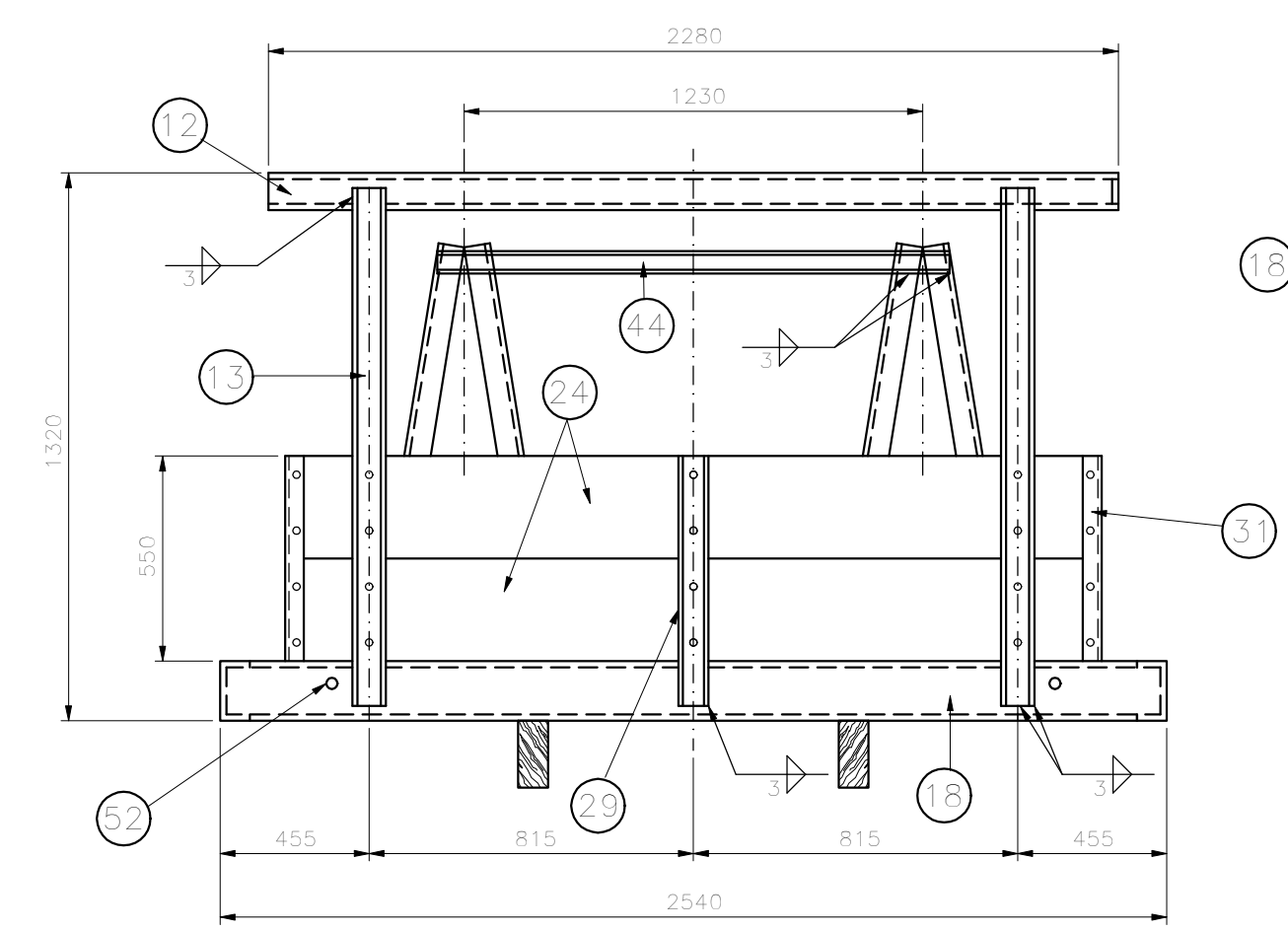
ELEVAÇÃO  
ESC. 1:20



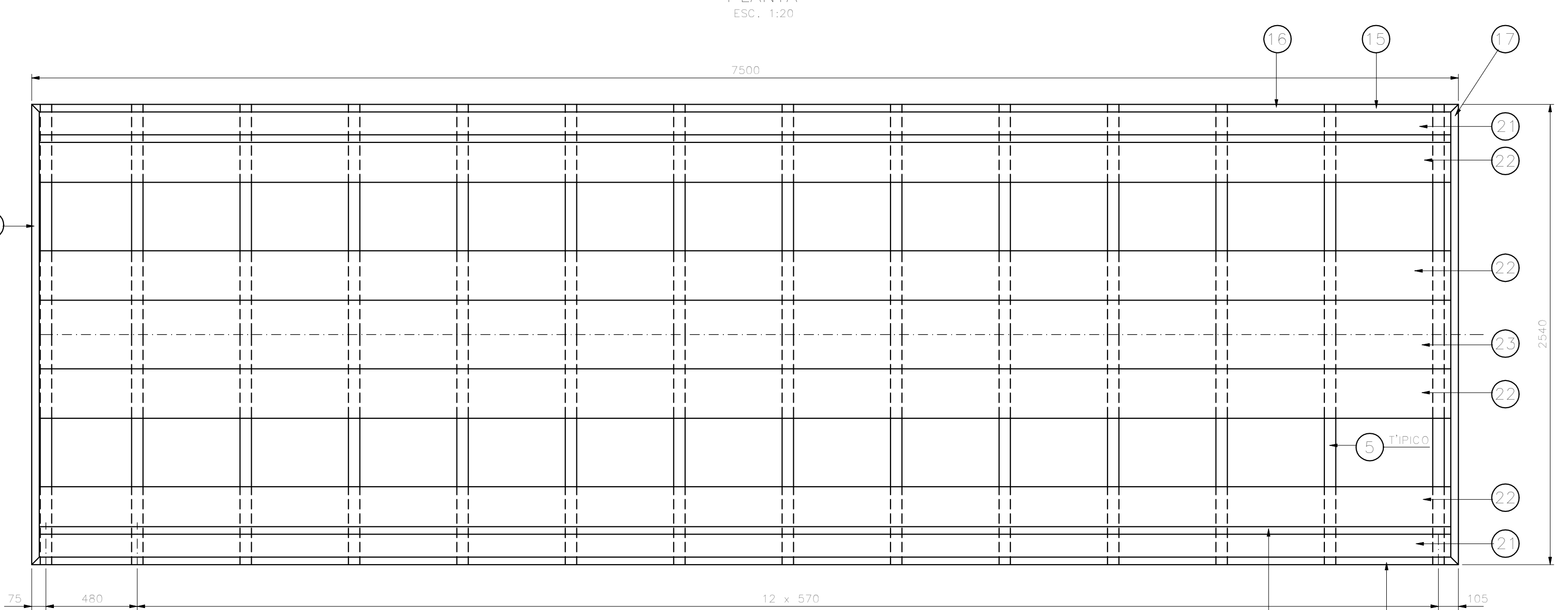
VISTA B  
ESC. 1:20



PLANTA  
ESC. 1:20



VISTA A  
ESC. 1:20



ESQUEMA DE MONTAGEM DO TABLADO  
ESC. 1:20

56	06	AÇO SAE 1020 # 5 x 60
55	06	CORRENTE SOLDADA DE ELÓS COMPRIDOS (28 x 16) EM AÇO # 3 COMPR. + 200
54	22#	PARAF. CABEÇA ABULADA COM PESCOÇO QUADRADO M 6 x 40 COM PORCA
53	02	PARAF. CABEÇA SEXTAVADA M 12 x 90 COM ROSCA TOTAL
52	02	PARAF. CABEÇA ABULADA COM PESCOÇO QUADRADO M 8 x 40 COM PORCA
51	34	PORCA BORRILETA M 12 EM AÇO
50	32	AÇO SAE 1020 # 12 x 395
49	28	PARAF. CABEÇA ABULADA COM PESCOÇO QUADRADO M 8 x 190 COM PORCA E ARRUELA
48	32	PARAF. CABEÇA ABULADA COM PESCOÇO QUADRADO M 8 x 150 COM PORCA E ARRUELA
47	360	MOLA PRATO # 14,2 DIN 2093
46	32	CORREIA PLANA COM 3 LONAS 6 x 50 x 1875
45	12#	PARAF. CABEÇA ABULADA COM PESCOÇO QUADRADO M 6 x 120 COM PORCA E ARRUELA
44	01	CH. DE AÇO ASTM - A36 C 5 x 145 x 1360
43	02	FECHO EM CH. DE AÇO ASTM - A36 8 x 40 x 157 E AÇO SAE 1020 # 22 x 80
42	02	FECHO EM CH. DE AÇO ASTM - A36 8 x 40 x 127 E AÇO SAE 1020 # 22 x 80
41	02	CH. DE AÇO ASTM - A36 8 x 60 x 217
40	02	AÇO SAE 1020 # 22 x 85 C/ ARRUELA E PORCA M12
39	04	CH. DE AÇO ASTM - A36 8 x 60 x 182
38	28	AÇO SAE 1020 # 15 x 135
37	28	CH. DE AÇO ASTM - A36 8 x 30 x 220
36	20	CH. DE AÇO ASTM - A36 8 x 35 x 120
35	20	AÇO SAE 1020 # 12 x 430 COM 2 PORCAS E 2 CONTRA-PORCAS M12
34	02	LONGARINA DE MADEIRA (CONFORME USUAL) COMPR. 7500
33	16	CH. DE AÇO ASTM - A36 C 5 x 75 x 1725
32	16	PEÇA DE MADEIRA 35 x 40 x 1725
31	04	CH. DE AÇO ASTM - A36 C 3 x 100 x 500
30	06	CH. DE AÇO ASTM - A36 C 3 x 100 x 500
29	01	CH. DE AÇO ASTM - A36 C 5 x 95 x 670
28	02	CH. DE AÇO ASTM - A36 C 5 x 95 x 550
27	24	CH. DE AÇO ASTM - A36 C 5 x 95 x 500
26	01	CH. DE AÇO ASTM - A36 8 x 50 x 1900
25	08	PEÇA DE MADEIRA 250 x 25 x 3700
24	04	PEÇA DE MADEIRA 25 x 275 x 2210
23	01	PEÇA DE MADEIRA 30 x 370 x 7440
22	04	PEÇA DE MADEIRA 30 x 230 x 7440
21	02	PEÇA DE MADEIRA 20 x 155 x 7450
20	20	CH. DE AÇO ASTM - A36 5 x 50 x 500
19	01	CH. DE AÇO ASTM - A36 C 5 x 145 x 1330
18	01	CH. DE AÇO ASTM - A36 C 5 x 205 x 2540
17	01	CH. DE AÇO ASTM - A36 C 5 x 205 x 2540
16	02	CH. DE AÇO ASTM - A36 C 5 x 205 x 7500
15	02	CH. DE AÇO ASTM - A36 C 5 x 190 x 7410
14	40	CH. DE AÇO ASTM - A36 C 5 x 45 x 75
13	02	CH. DE AÇO ASTM - A36 C 5 x 185 x 1300
12	01	CH. DE AÇO ASTM - A36 C 5 x 185 x 2280
11	08	CH. DE AÇO ASTM - A36 5 x 125 x 140
10	02	CH. DE AÇO ASTM - A36 8 x 100 x 150
9	32	CH. DE AÇO ASTM - A36 10 x 50 x 50
8	16	CH. DE AÇO ASTM - A36 5 x 60 x 100
7	04	CH. DE AÇO ASTM - A36 5 x 60 x 175
6	10	CH. DE AÇO ASTM - A36 C 5 x 175 x 400
5	14	PEÇA DE MADEIRA 60 x 160 x 2530
4	08	CANTONEIRA DE AÇO ASTM - A36 L 50 x 50 x 6 x 1800
3	20	CH. DE AÇO ASTM - A36 C 5 x 145 x 1100
2	32	CH. DE AÇO ASTM - A36 C 5 x 145 x 1650
1	32	PEÇA DE MADEIRA 50 x 100 x 1650

POSQUANT. DISCRIMINAÇÃO

c	b	a	DATA	EXECUT.	VISTO	APROV.
ALTERAÇÕES						

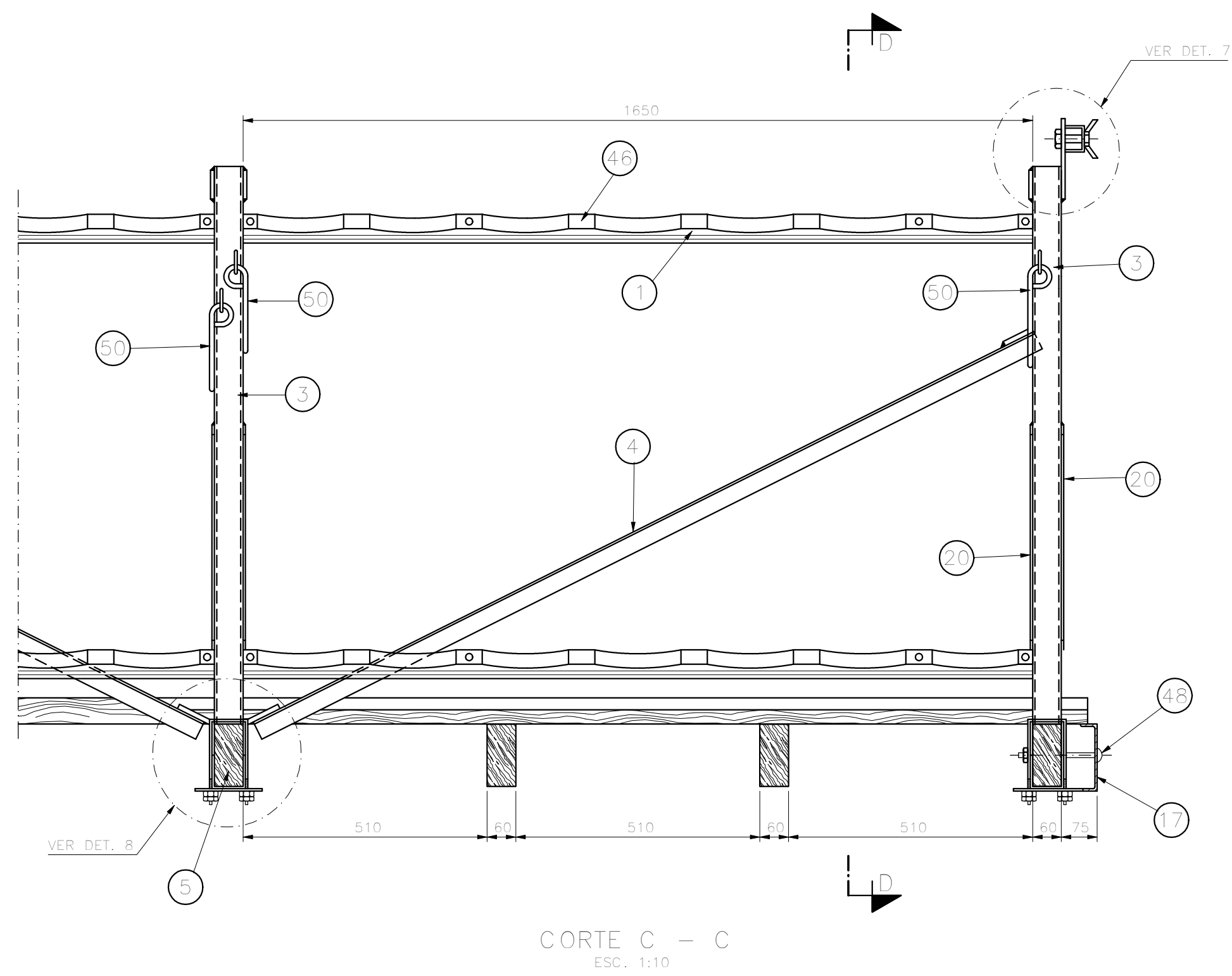
NOTAS  
 1 - DIMENSÕES EM MILÍMETRO EXCETO ONDE INDICADO.  
 2 - AS PARTES METÁLICAS SERÃO LIMPAS POR JATO ABRASIVO E ISENTAS DE IMPUREZAS, RECEBENDO PINTURA BÁSICA EM UMA DEMÃO DE 74 m DE CHLORSEAL ALTA ESPESURA (093/0024 INTERNACIONAL) OU SIMILAR.  
 3 - A PINTURA DE ACABAMENTO E QUALIDADE DA MADEIRA SERÃO ESPECIFICADAS PELA UNIDADE DE TRANSPORTES DA COPASA MG E EXPLICITADAS NA PROPOSTA DO FORNECEDOR.  
 4 - A FIXAÇÃO DOS BARROTES "AS LONGARINAS", DAS LONGARINAS AO CHASSI E DEMAIS PEÇAS NÃO ESPECIFICADAS, SÃO AS "USUAIS DE CARROCERIA" E SÃO PARTE INTEGRANTE DO FORNECIMENTO.

5 - O CONTROLE DE QUALIDADE SERÁ REALIZADO NAS FASES DE FABRICAÇÃO, PINTURA BÁSICA E NO RECEBIMENTO FINAL.  
 6 - ESTE PROJETO DIGITALIZADO SUBSTITUI O ORIGINAL DE PRANCHETA.

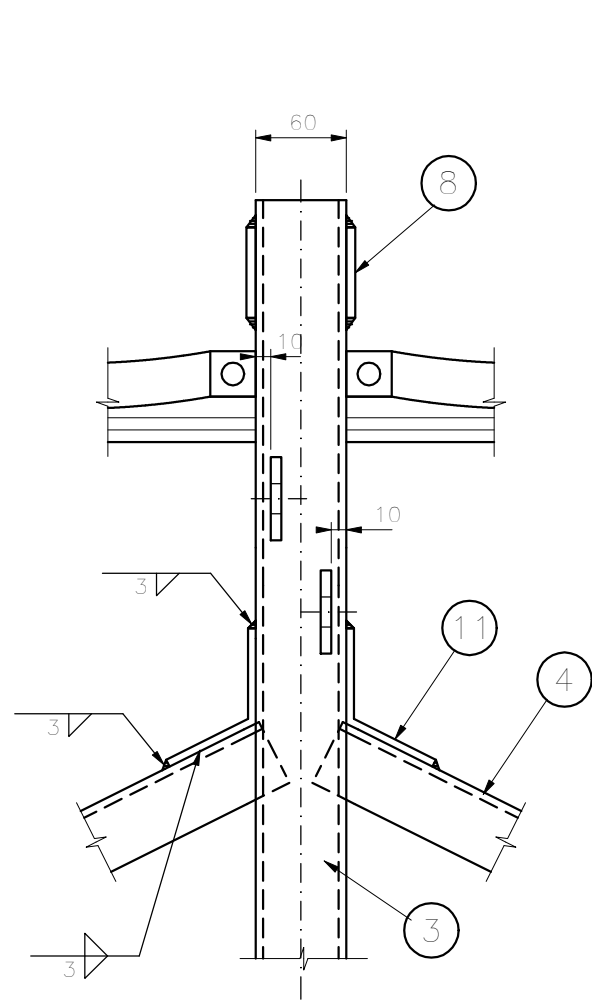
PROJETO PADRÃO		COPASA	
ASS.	CREA	VISTO SREP	MARIO ROZENRUCH
PROJ.	INOME COPASA	APROV. DRM	RUBENS CELHO DE MELLO
NORM. TÉCNICA	JOSÉ ROSENBERG DOS SANTOS	DATA	JANEIRO/2002
DES.	VISTO INEA		
PROJECT	LUIZ F. SILVEIRE		

COMPANHIA DE SANEAMENTO DE MINAS GERAIS		ESCALA	FORM.
P.127/0		INDICADA	A1
BERÇO DE CILINDROS DE 50 kg DE CLORO EM CAMINHÃO - CONJUNTO -		NÚMERO	
		FOLHA	01 DE 04

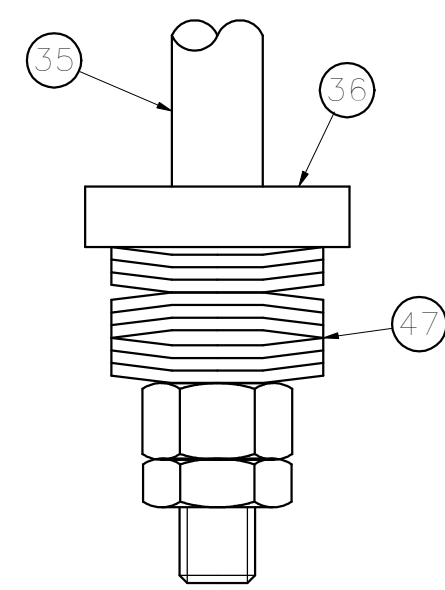
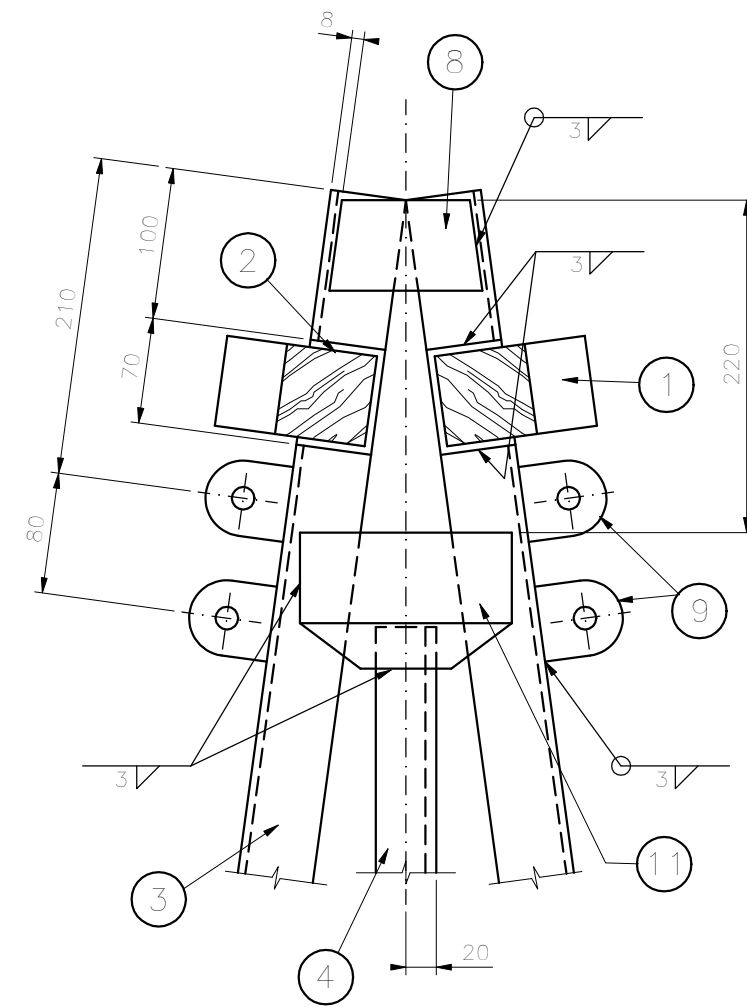
ORIGINAL ASSINADO NO ARQUIVO TÉCNICO



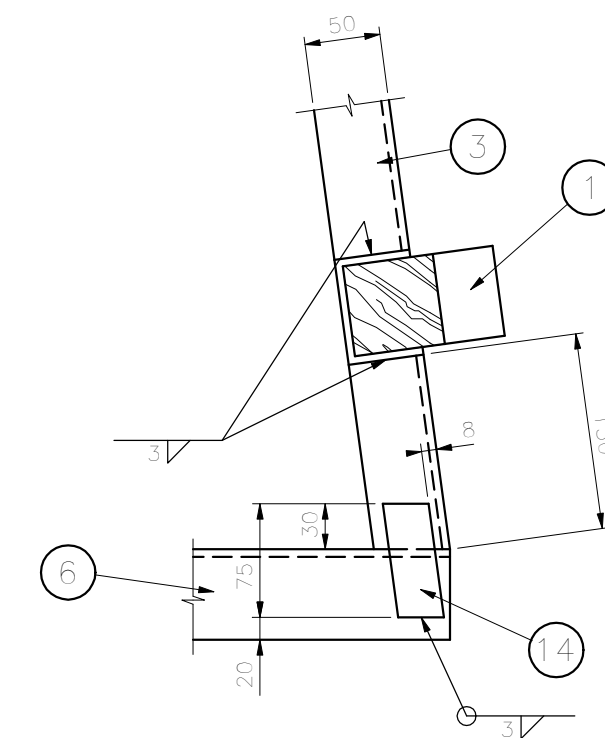
CORTE C - C  
ESC. 1:10



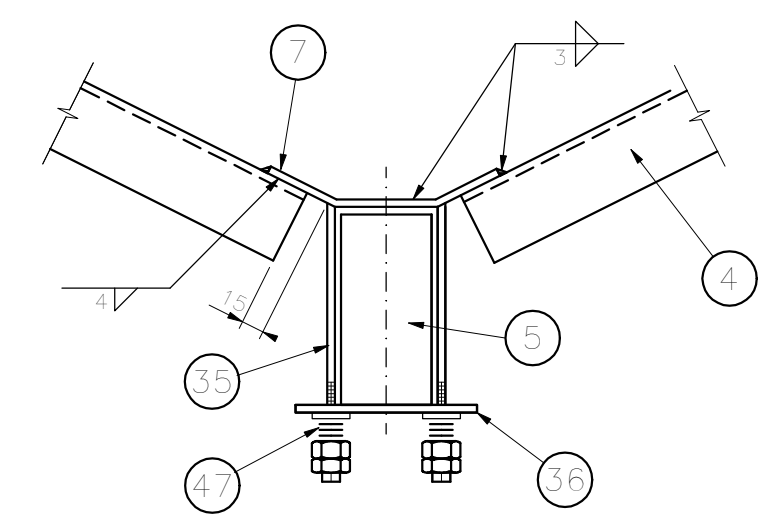
DETALHE 1  
ESC. 1:5



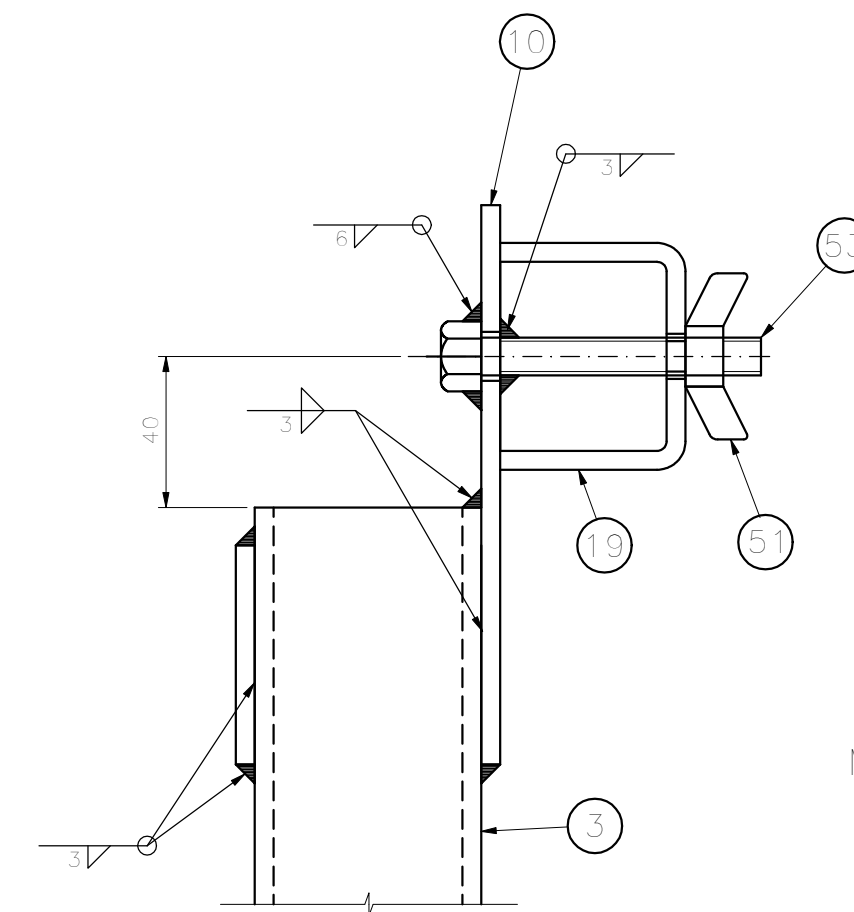
DETALHE 3  
ESC. 1:1



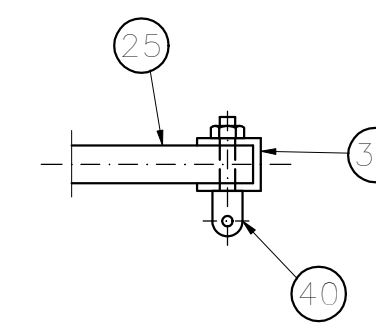
DETALHE 4  
ESC. 1:5



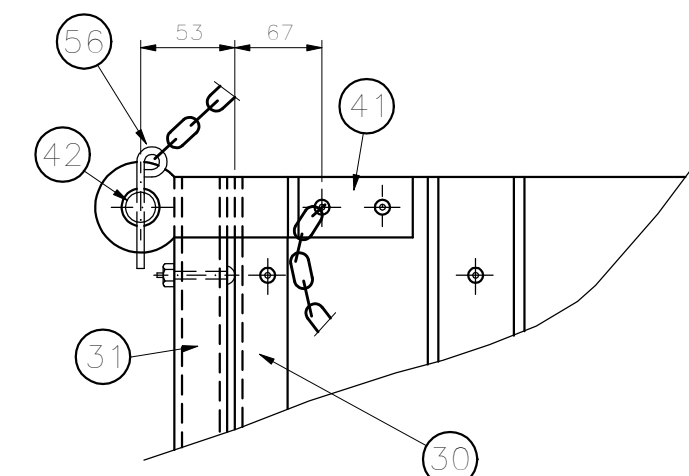
DETALHE 5  
ESC. 1:5



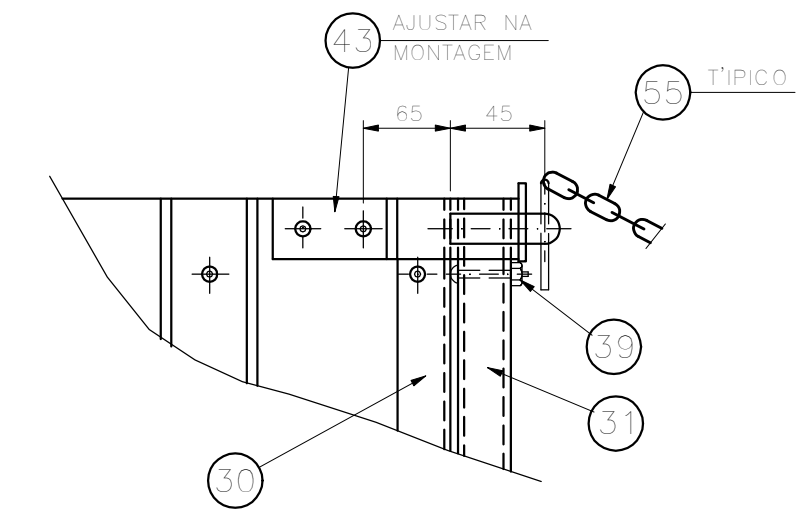
DETALHE 6  
ESC. 1:2



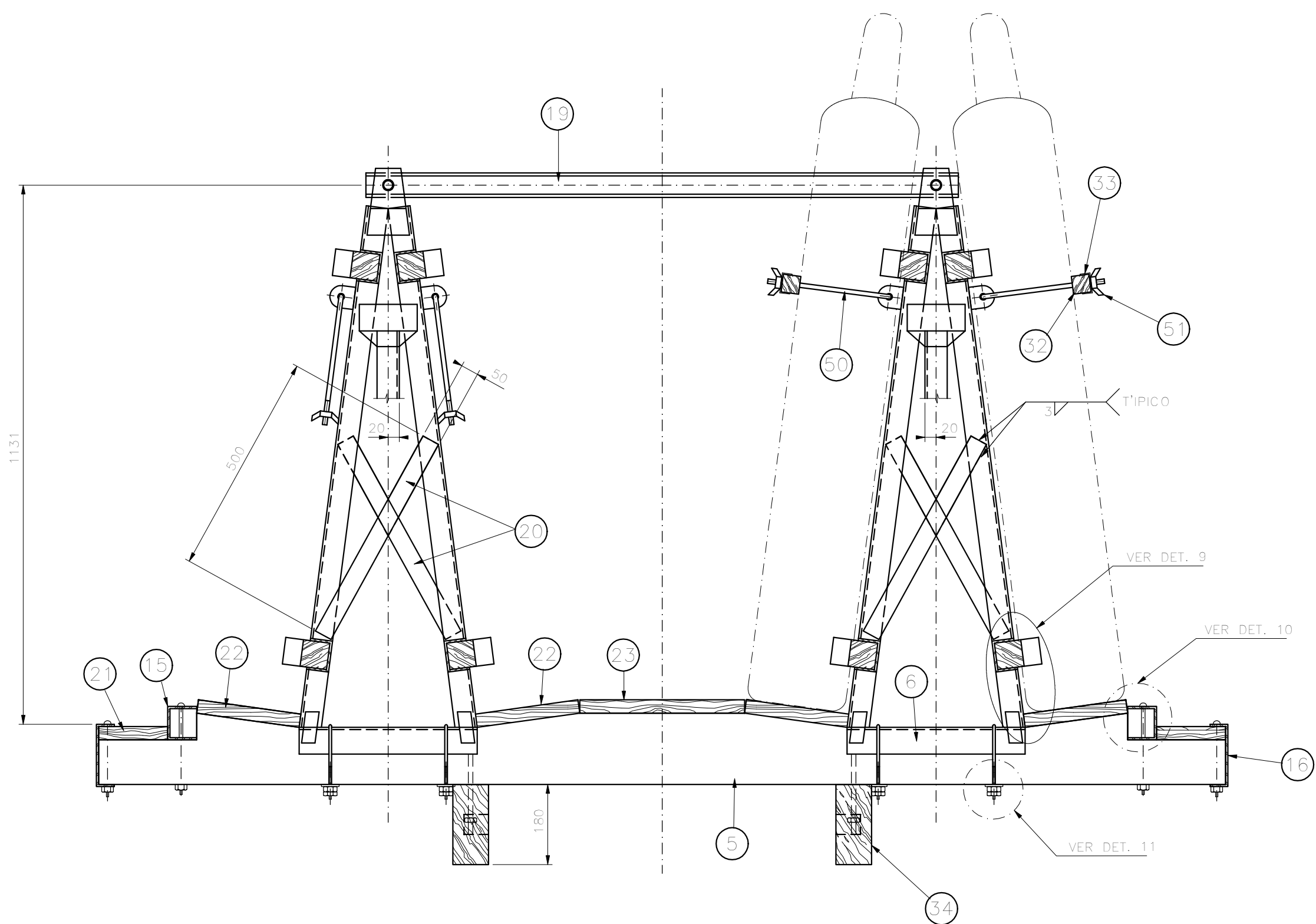
MONTAGEM POS. 40  
ESC. 1:5



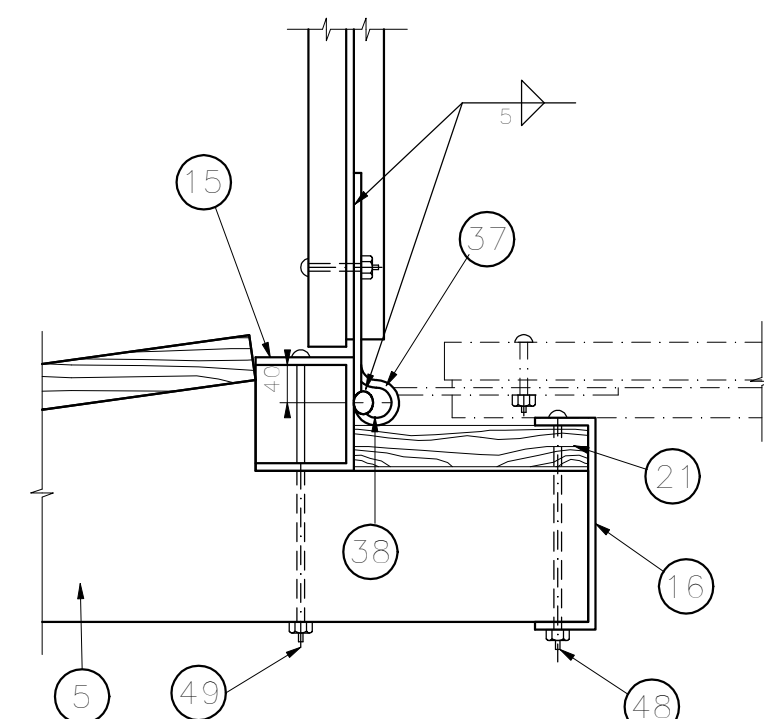
DETALHE 7  
ESC. 1:5



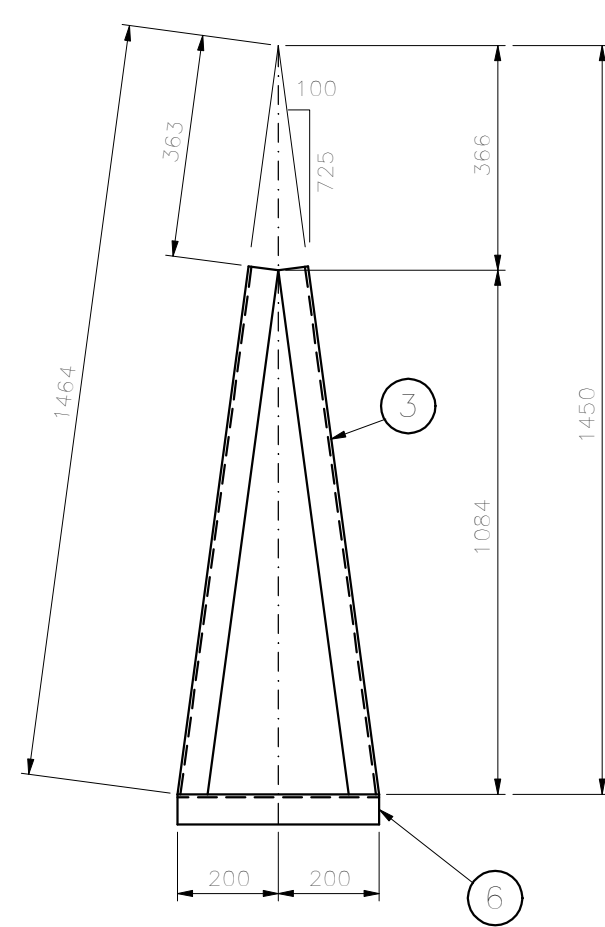
DETALHE 8  
ESC. 1:5



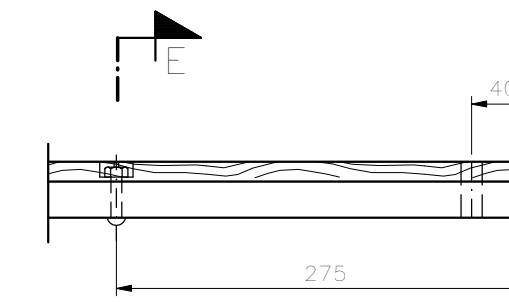
CORTE D - D  
ESC. 1:10



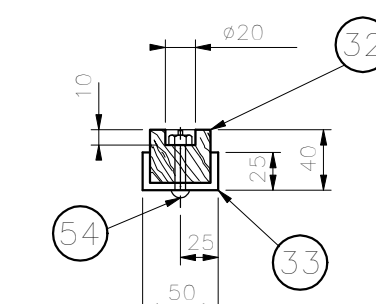
DETALHE 9  
ESC. 1:5



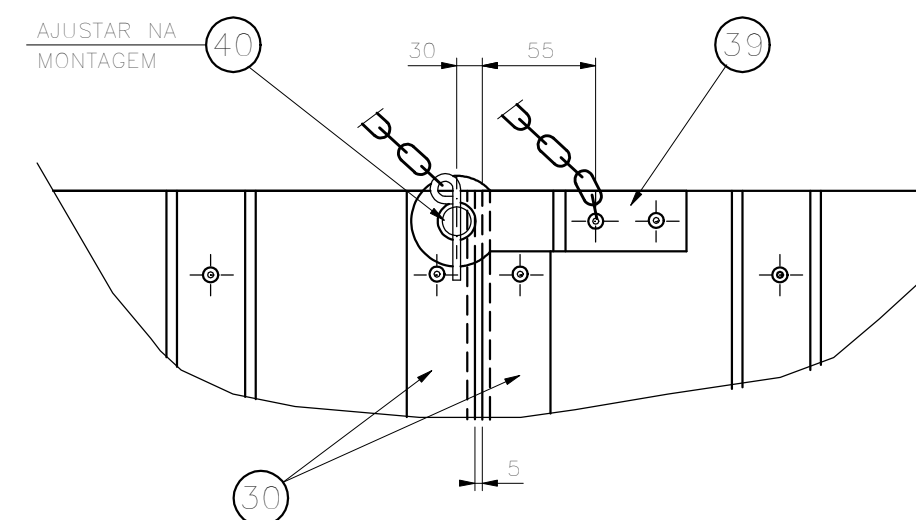
ESQUEMA DE MONTAGEM DA  
ESTRUTURA DE APOIO DOS CILINDROS  
ESC. 1:15



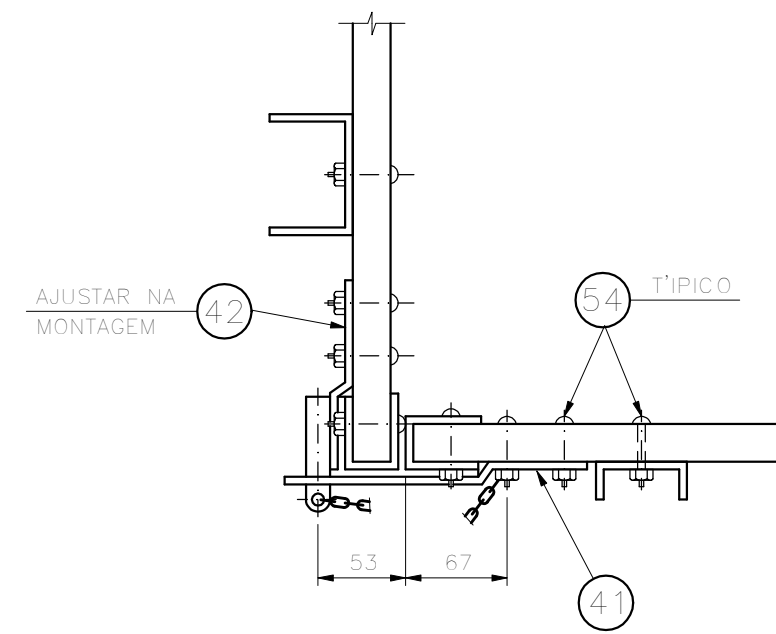
DET. MONTAGEM  
DAS POS. 32 E 33  
ESC. 1:2



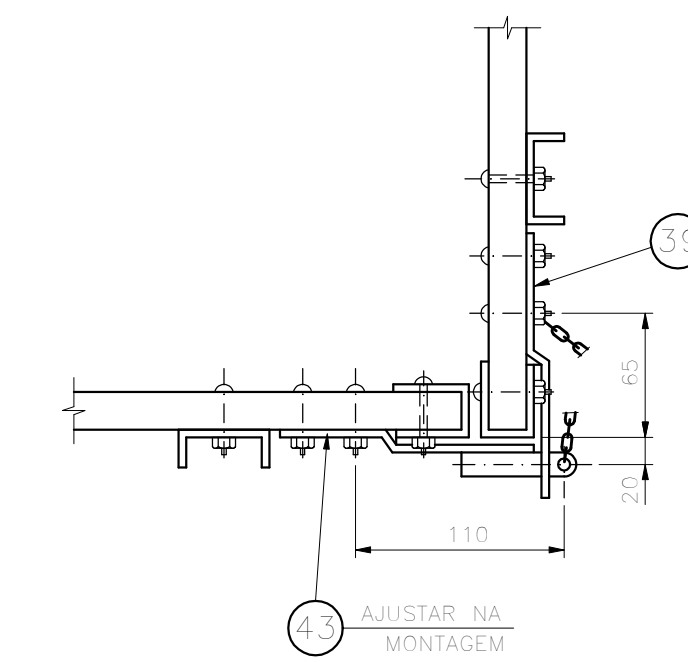
CORTE E - E  
ESC. 1:5



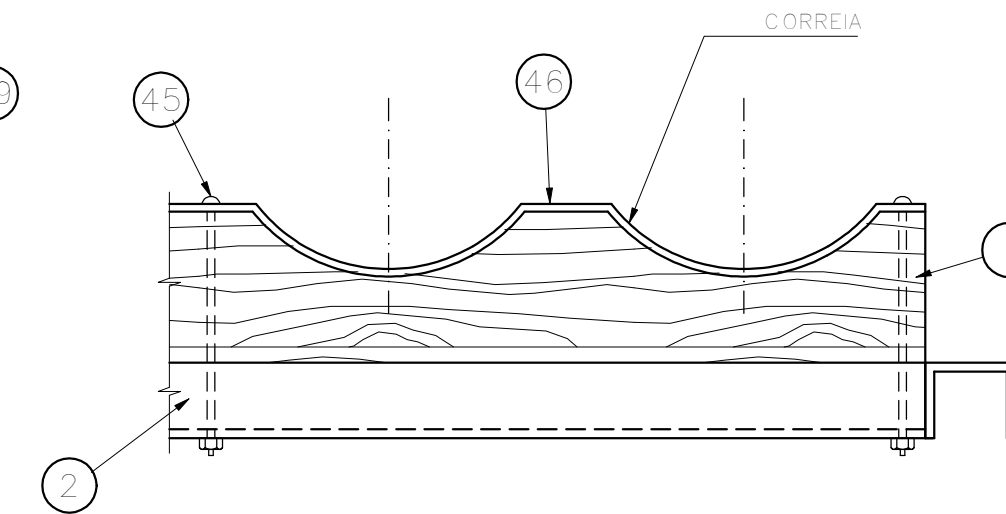
DETALHE 10  
ESC. 1:5



DETALHE 11  
ESC. 1:5



DETALHE 12  
ESC. 1:5



DET. FIXAÇÃO DA CORREIA  
ESC. 1:5

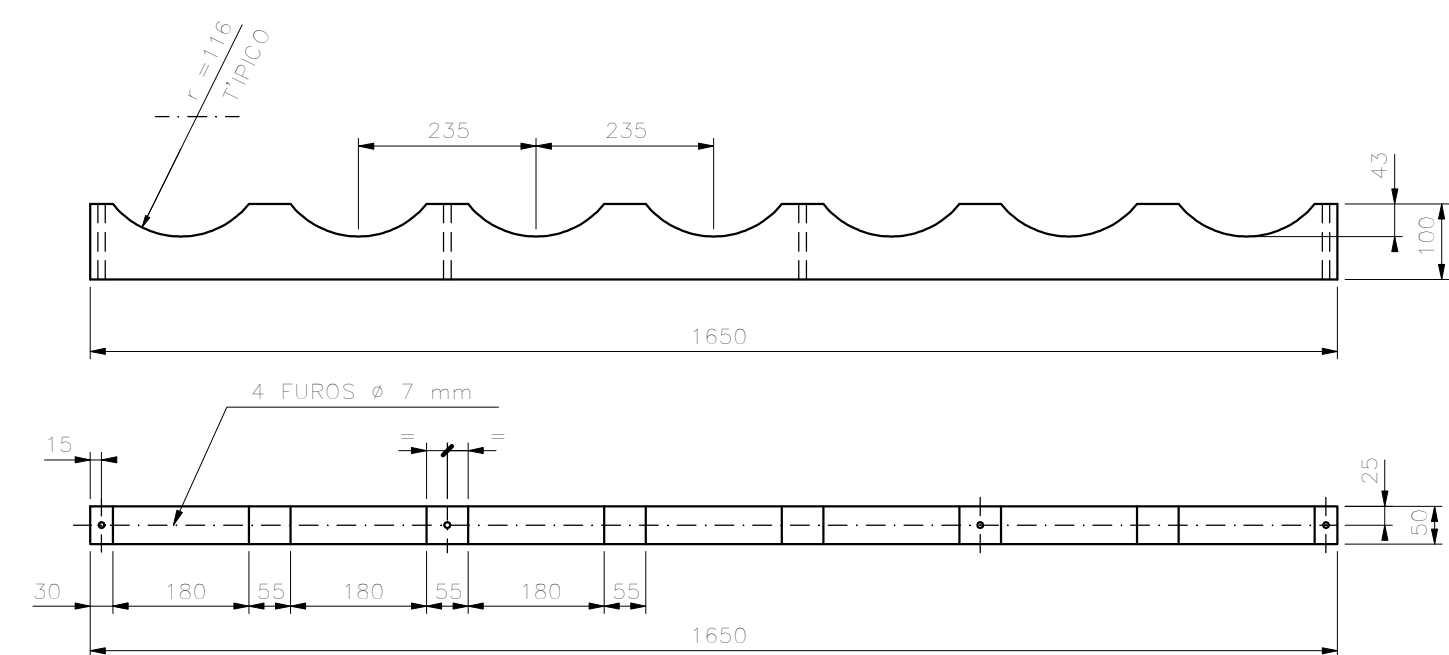
NOTAS  
1 - DIMENSÕES EM MILÍMETRO, EXCETO ONDE INDICADO.  
2 - ESTE PROJETO DIGITALIZADO SUBSTITUI O ORIGINAL DE PRANCHETA.

c			
b			
a			
	DATA	EXECUT.	VISTO
			APROV.
ALTERAÇÕES			

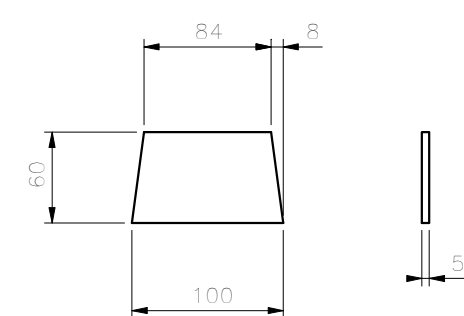
PROJETO PADRÃO		COPASA	
RI ASS.	CREA	VISTO SREP	
NOME COPASA		MARIO ROZENBRUCH	
PROJ.	VISTO NORM. TÉCNICA	APROV. DRM	
NORM. TÉCNICA	JOSÉ ROSENDO DOS SANTOS	RUBENS CELHO DE MELLO	
DES.	VISTO INEA	DATA	
PROJECT	LUIZ F. SILVESTR	JANEIRO/2002	

COMPANHIA DE SANEAMENTO DE MINAS GERAIS  
P.127/0  
BERÇO DE CILINDROS DE 50 kg  
DE CLORO EM CAMINHÃO  
- DETALHES DE MONTAGEM -

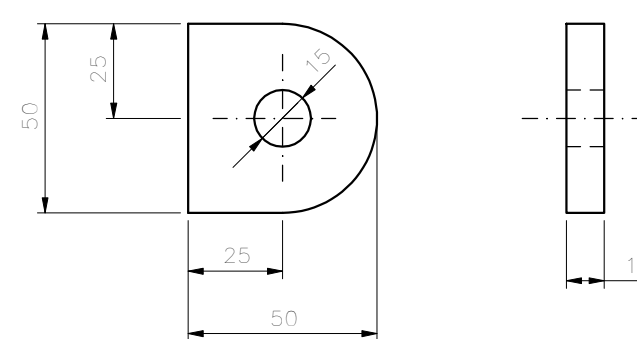
ESCALA	INDICADA	FORM.	A1
NÚMERO			
FOLHA	02	DE	04



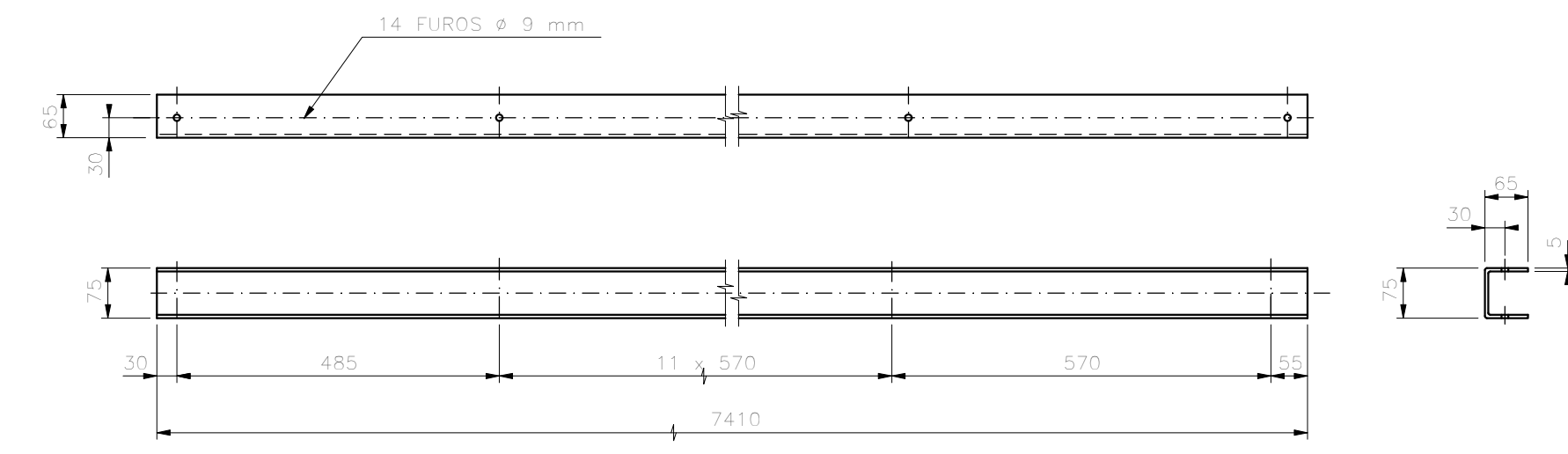
POS. 1  
ESC. 1:10



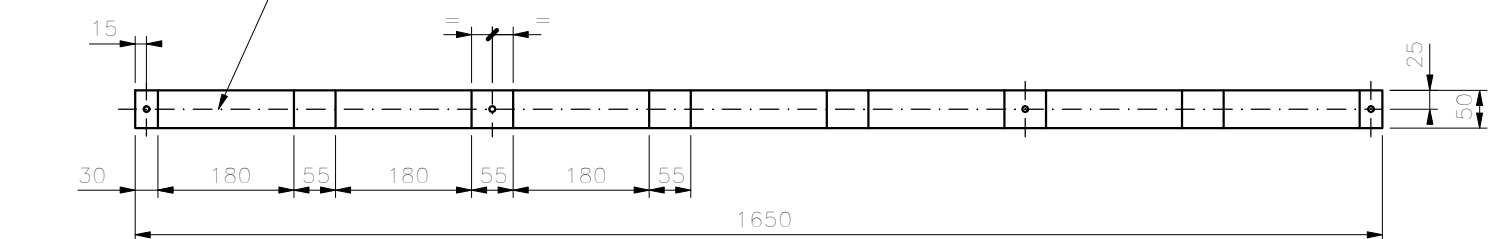
POS. 8  
ESC. 1:5



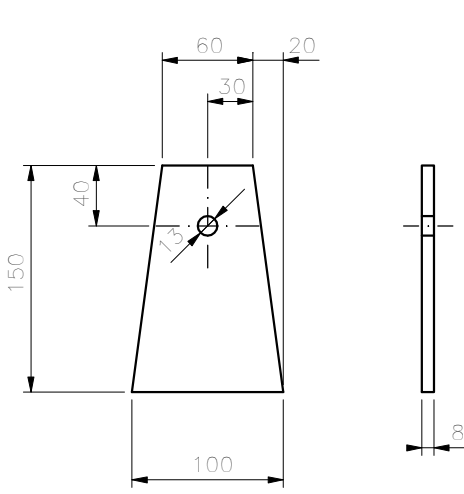
POS. 9  
ESC. 1:5



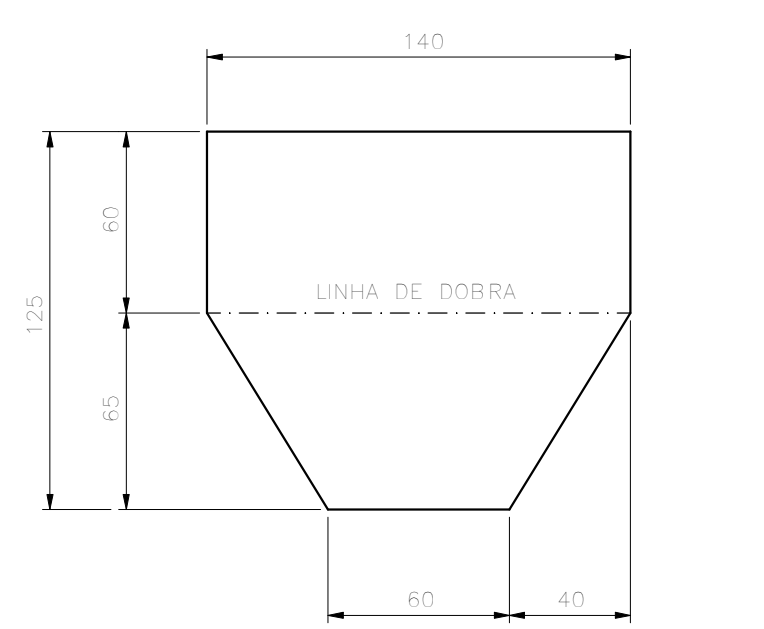
POS. 15  
ESC. 1:10



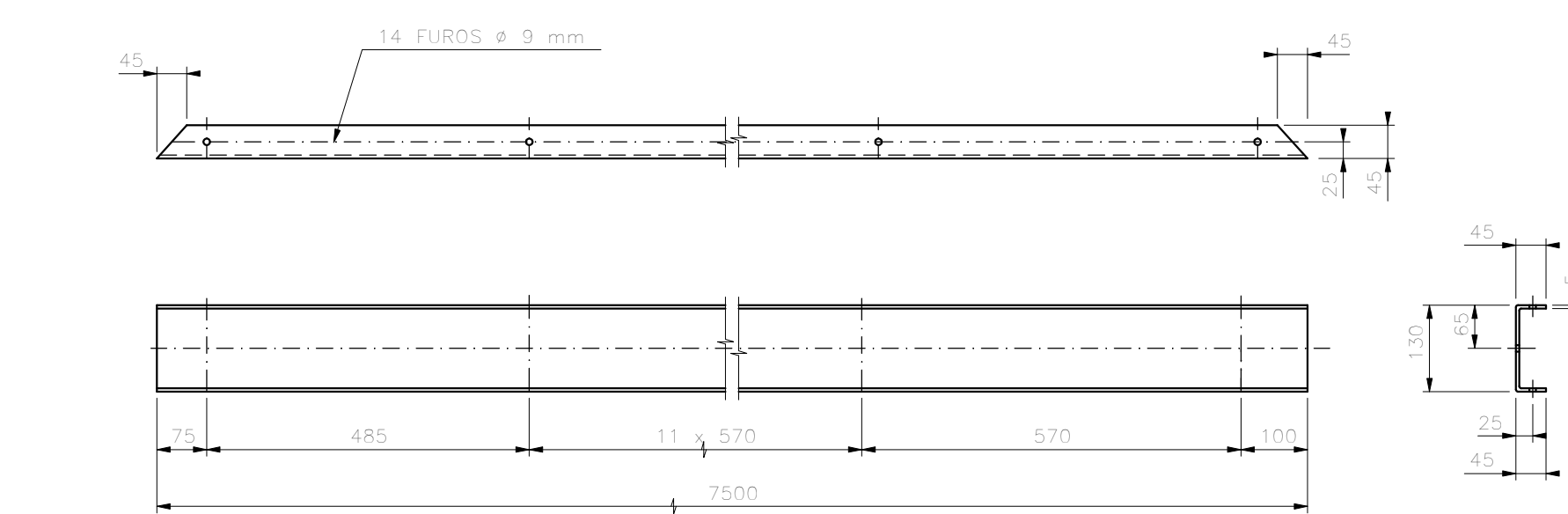
POS. 2  
ESC. 1:10



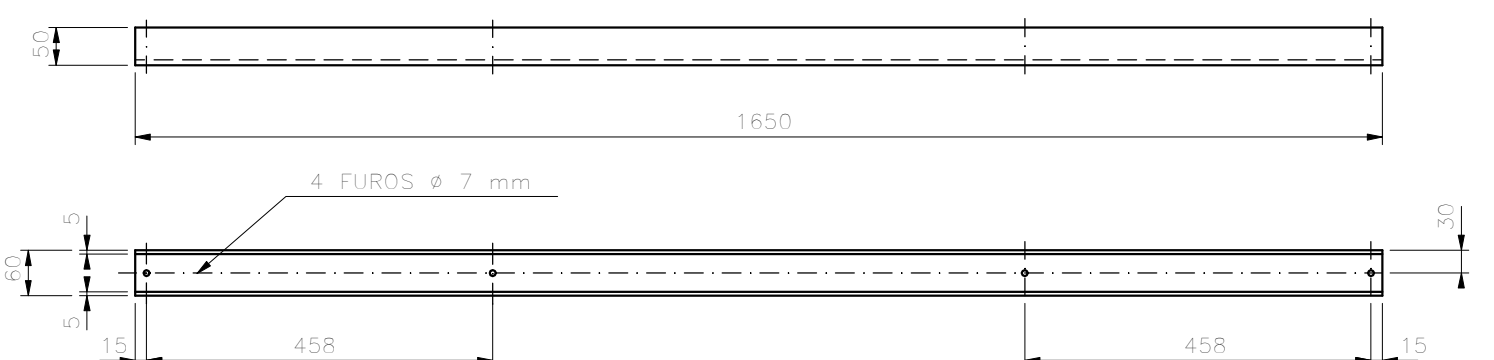
POS. 10  
ESC. 1:5



POS. 11  
ESC. 1:2,5



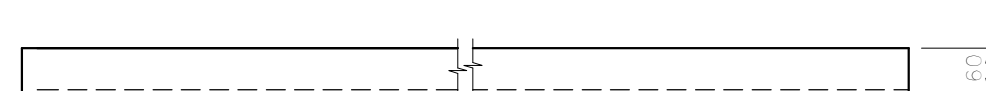
POS. 16  
ESC. 1:10



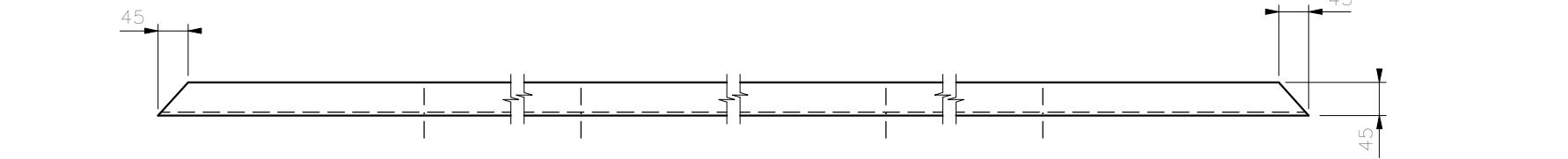
POS. 3  
ESC. 1:10



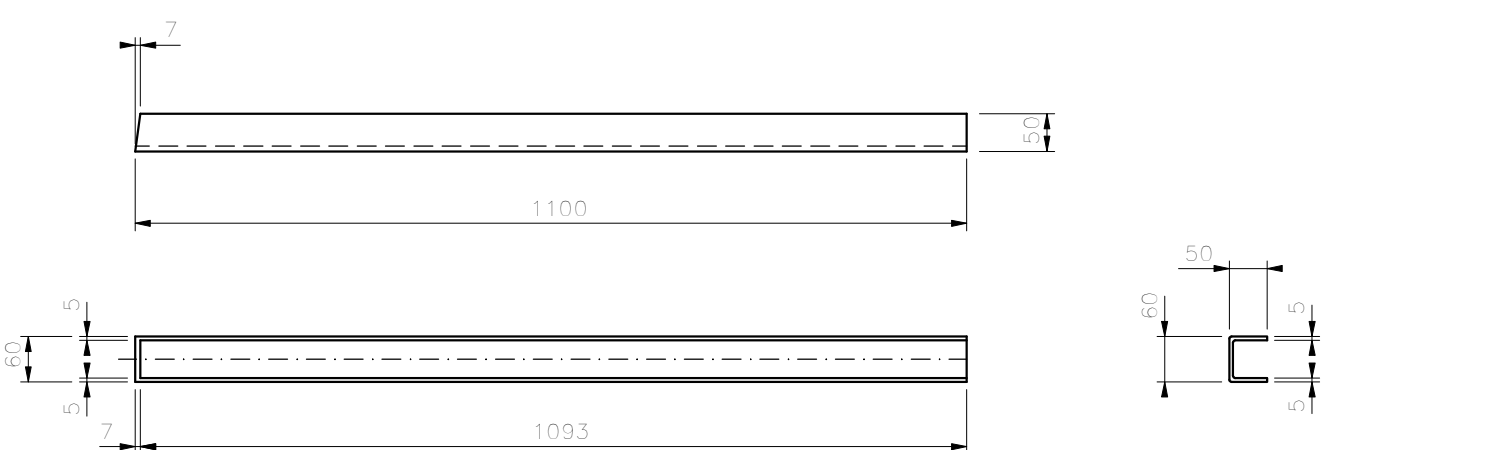
POS. 12  
ESC. 1:10



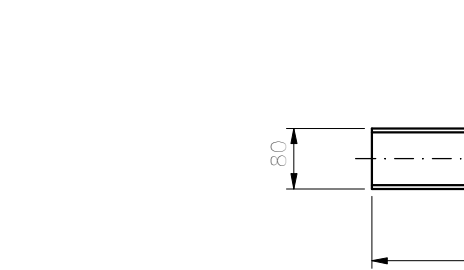
POS. 13  
ESC. 1:10



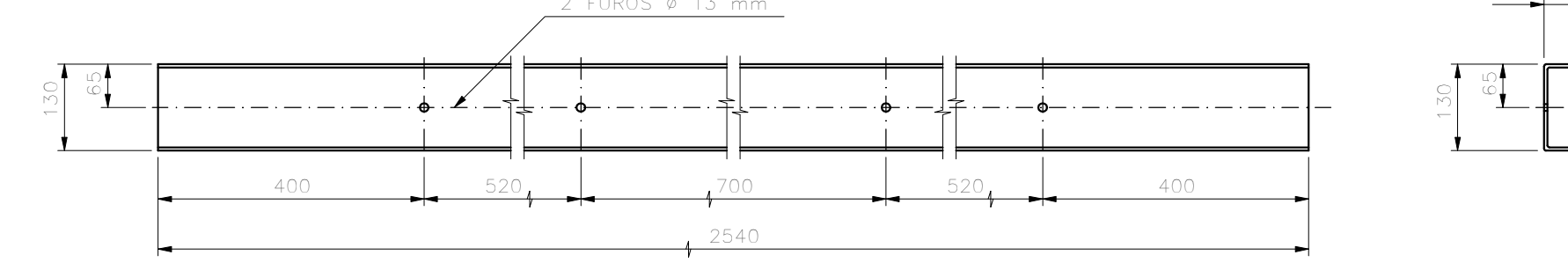
POS. 17  
ESC. 1:10



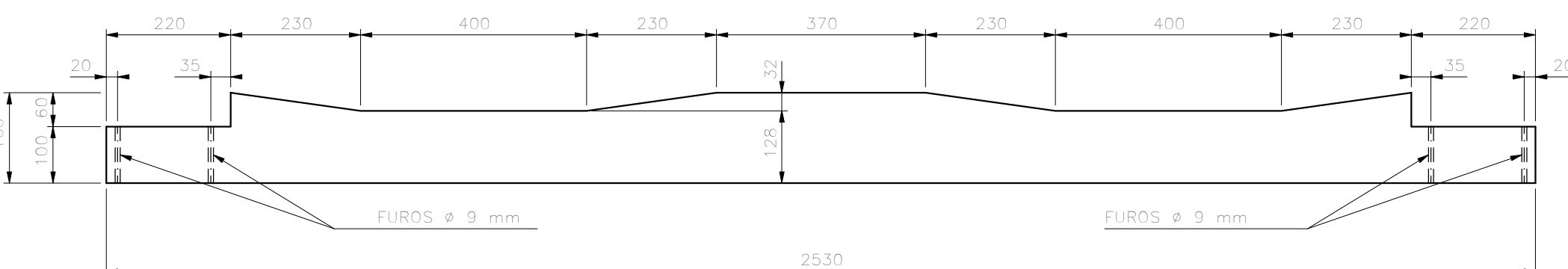
POS. 5  
ESC. 1:10



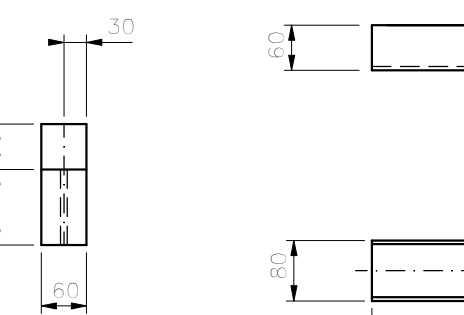
POS. 14  
ESC. 1:2



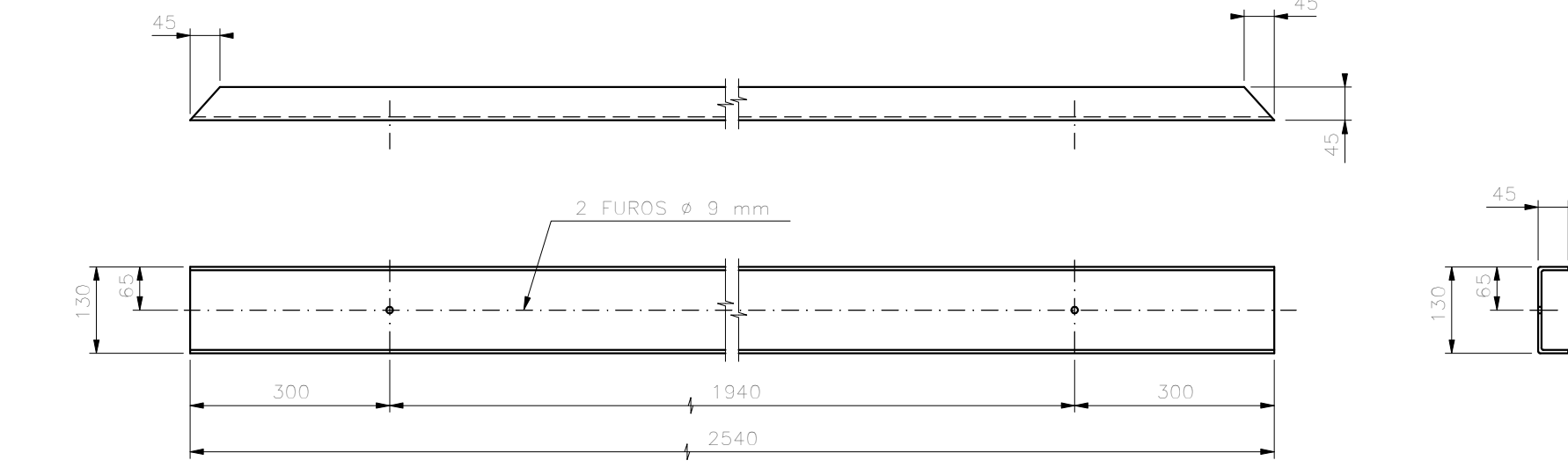
POS. 18  
ESC. 1:10



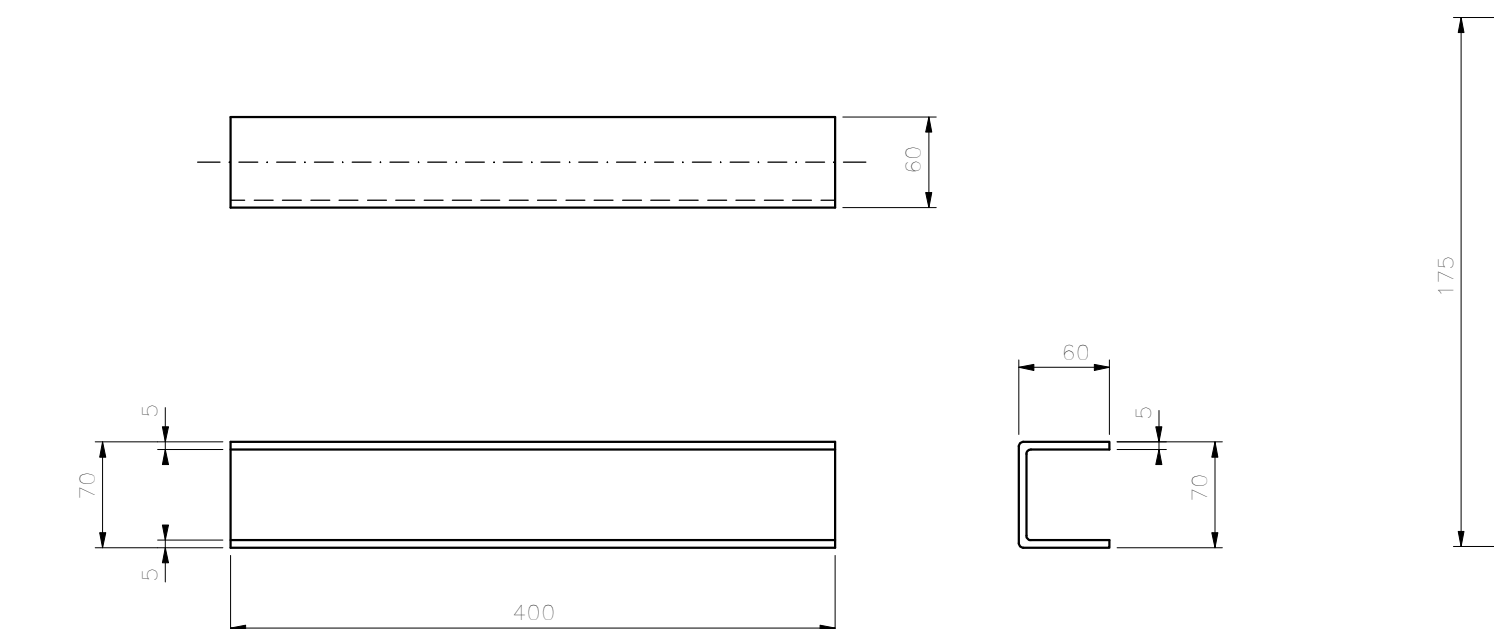
POS. 7  
ESC. 1:2,5



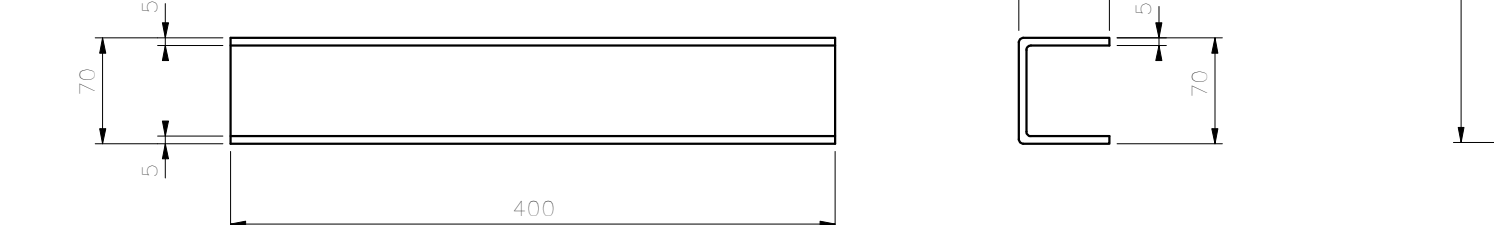
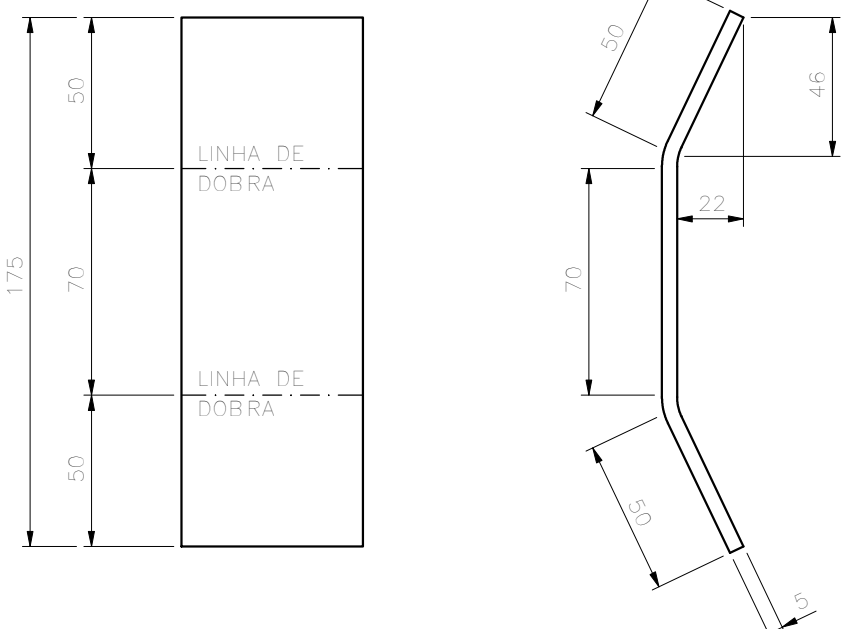
POS. 19  
ESC. 1:10



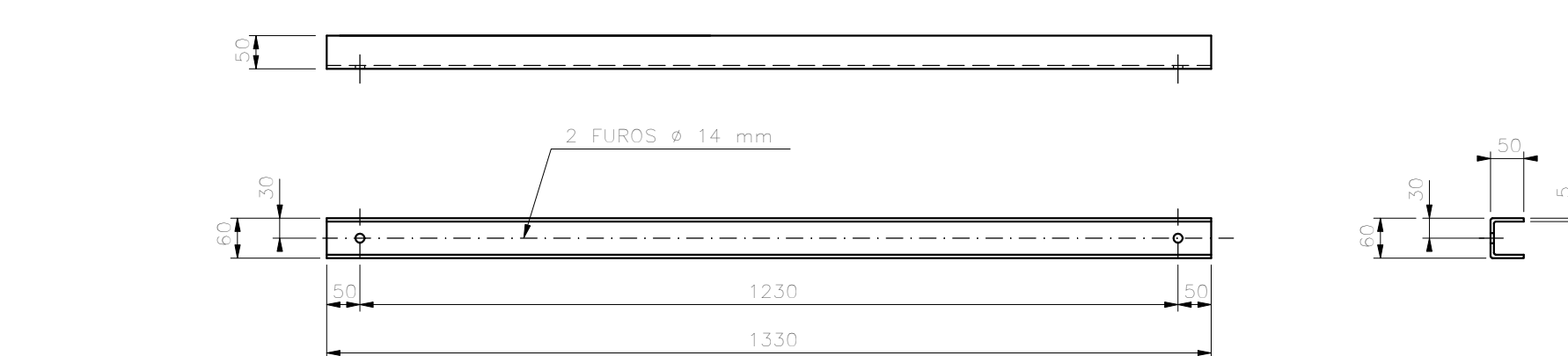
POS. 19  
ESC. 1:10



POS. 3  
ESC. 1:5



POS. 14  
ESC. 1:2

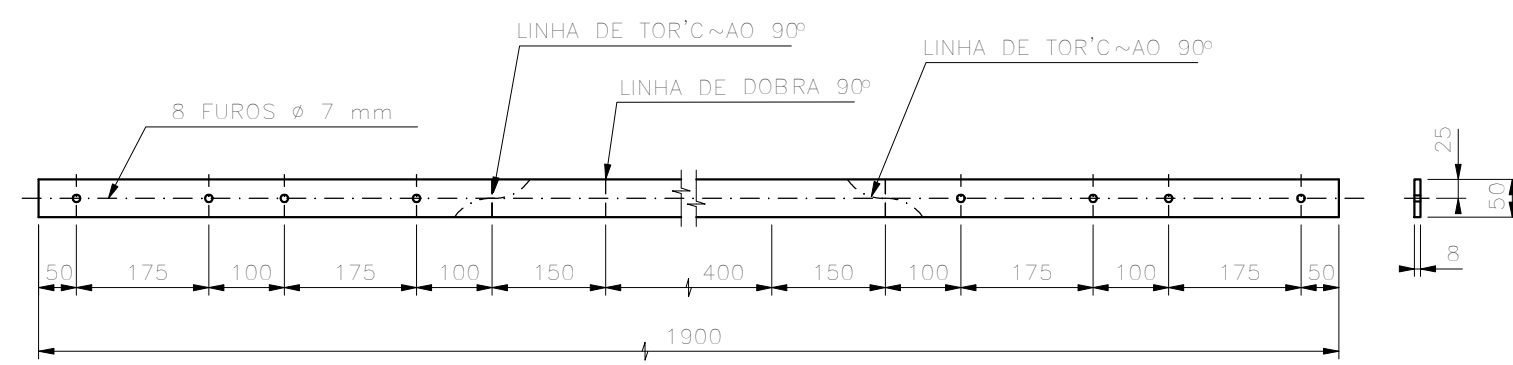


POS. 19  
ESC. 1:10

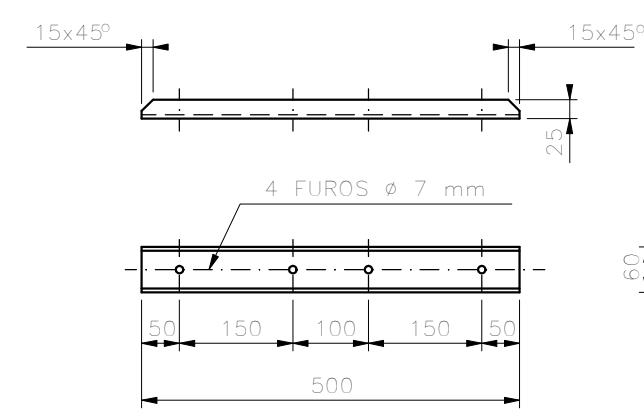
NOTAS  
1 - DIMENS~OES EM MIL~METRO , EXCETO ONDE INDICADO.  
2 - AS ROSCAS DEVEM APRESENTAR ACABAMENTO PERFEITO SEM FALHAS NOS FILETES OFERECENDO ACOPLAMENTO CORRETO ENTRE PEÇAS.  
3 - ESTE PROJETO DIGITALIZADO SUBSTITUI O ORIGINAL DE PRANCHETA.

PROJETO PADR~AO		COPASA		COMPANHIA DE SANEAMENTO DE MINAS GERAIS		ESCALA	FORM.
				P.127/0		INDICADA	A1
RI	ASS.	CREA	VISTO S/PEP	BERÇO DE CILINDROS DE 50 kg		NÚMERO	
	WILSON COPASA		MARIO ROZENBRUCH	DE CLORO EM CAMINH~AO			
PROJ.	NORM. TÉCNICA	VISTO NORM. TÉCNICA	APROV. DRM	- DETALHES DE PEÇAS -			
	NORM. TÉCNICA	JOSE ROGERIO DOS SANTOS	RUIRIS CELHO DE MELLO				
DES.	VISTO INEA		DATA			FOLHA	03 DE 04
	PROJECT	LUIZ F. SILVEIRE	JANEIRO/2002				

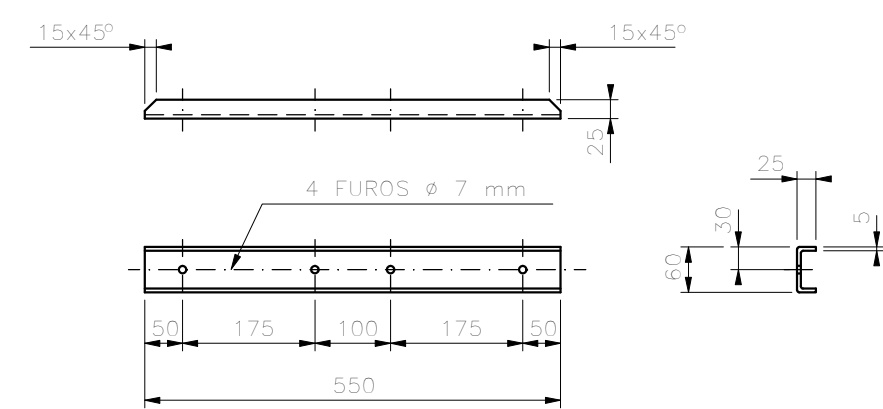
ORIGINAL ASSINADO NO ARQUIVO TECNICO



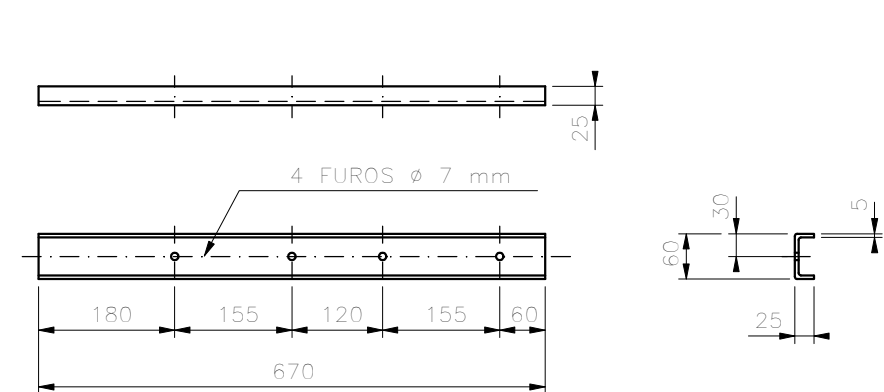
POS. 26  
ESC. 1:10



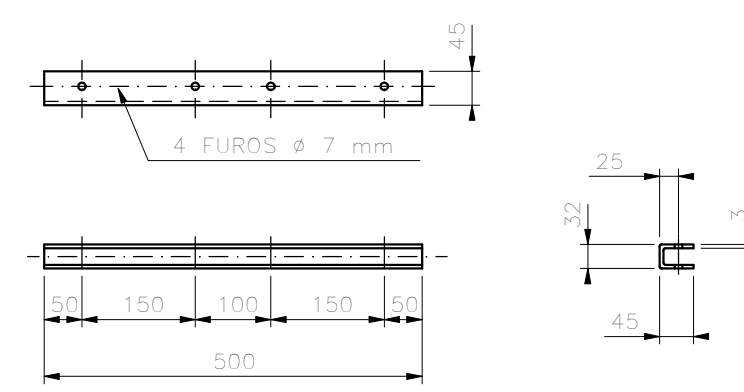
POS. 27  
ESC. 1:10



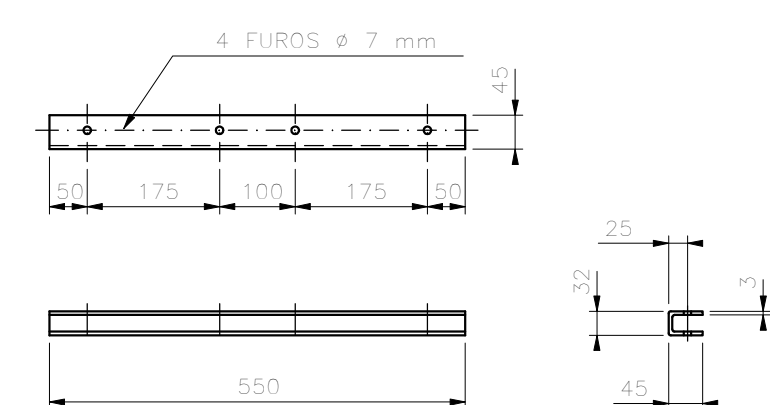
POS. 28  
ESC. 1:10



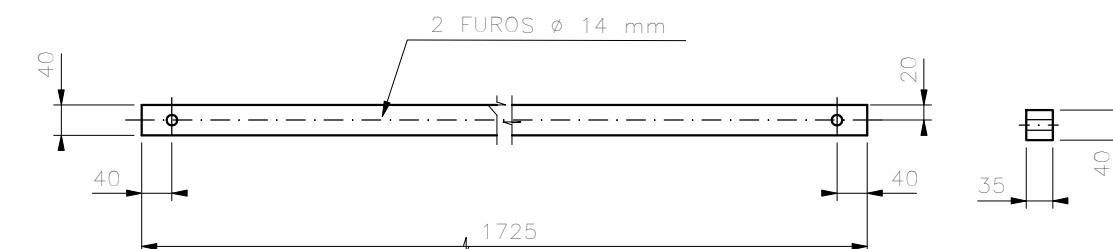
POS. 29  
ESC. 1:10



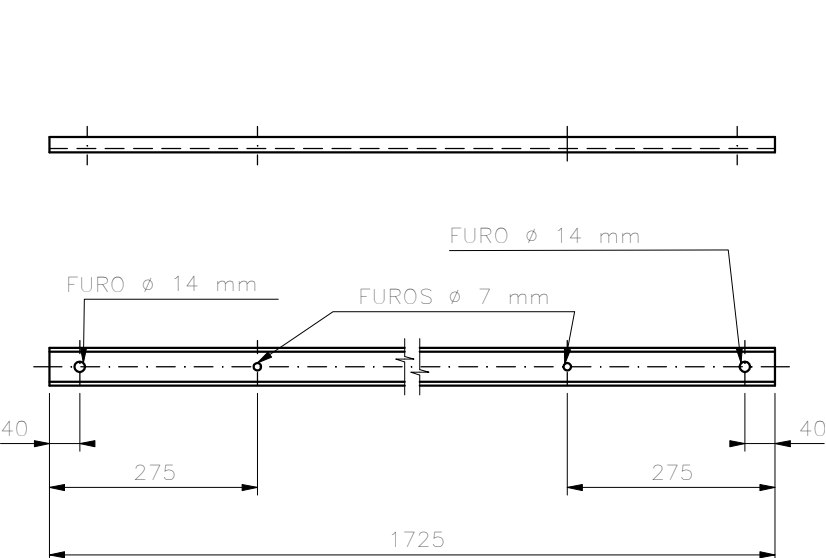
POS. 30  
ESC. 1:10



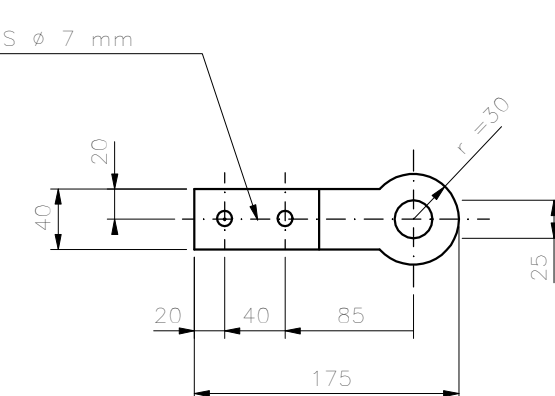
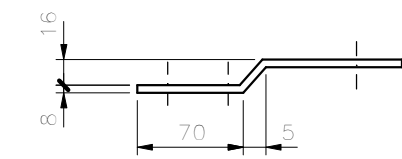
POS. 31  
ESC. 1:10



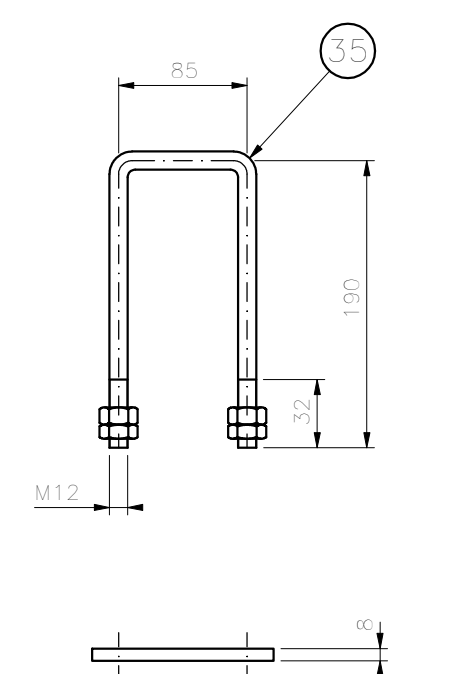
POS. 32  
ESC. 1:10



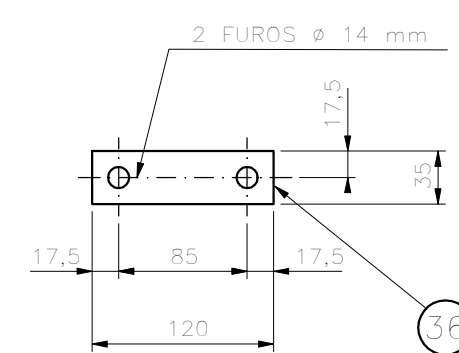
POS. 33  
ESC. 1:10



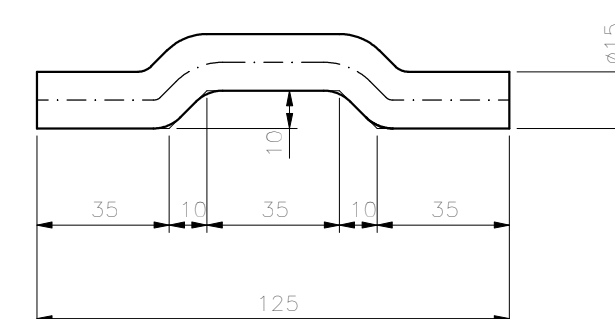
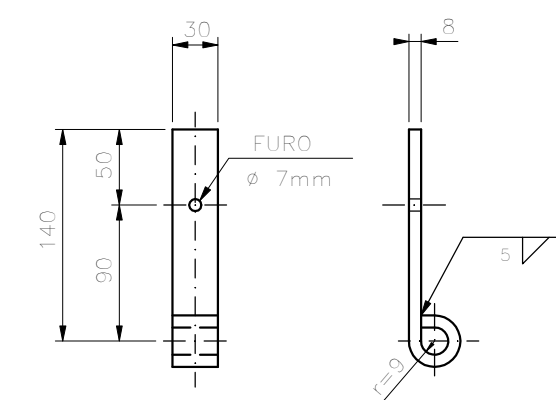
POS. 39  
ESC. 1:5



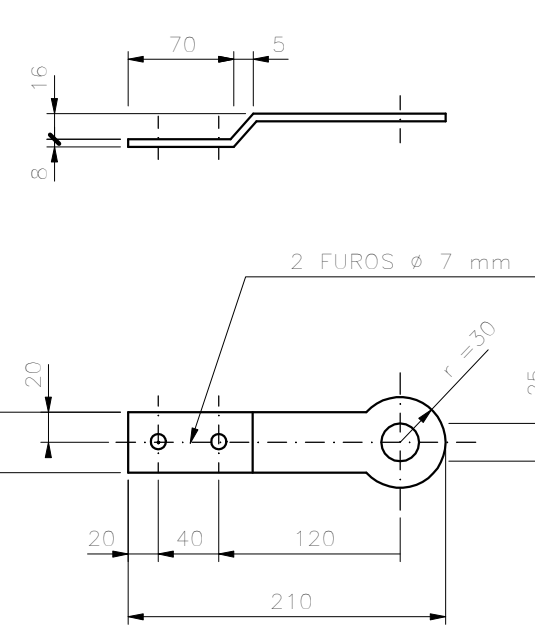
GRAMPO  
ESC. 1:5



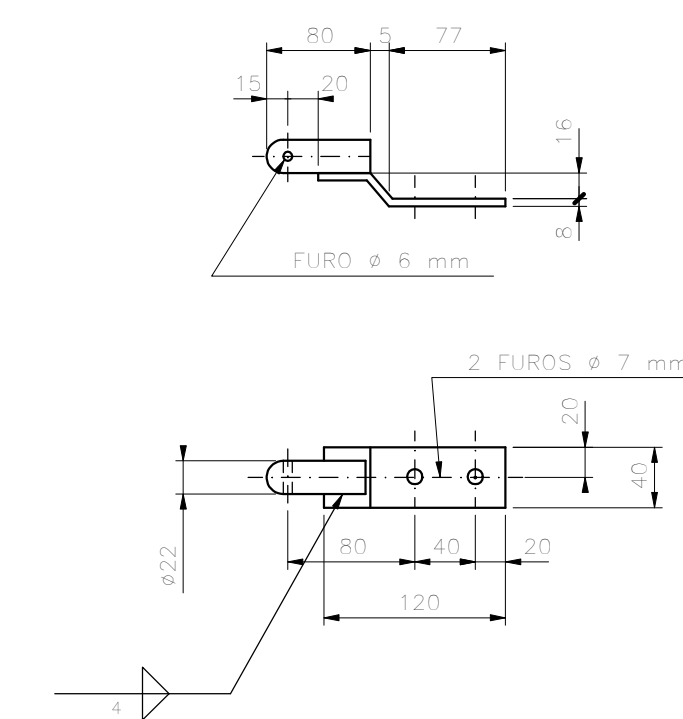
POS. 37  
ESC. 1:5



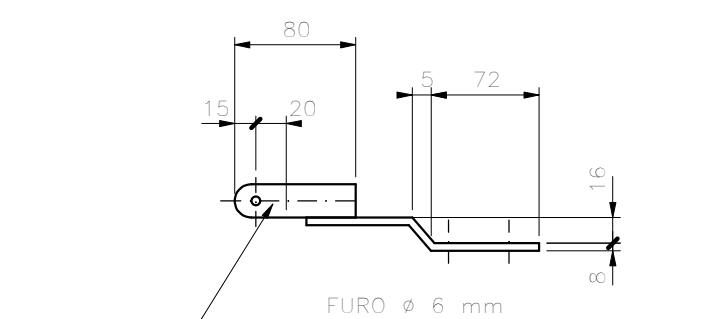
POS. 38  
ESC. 1:2



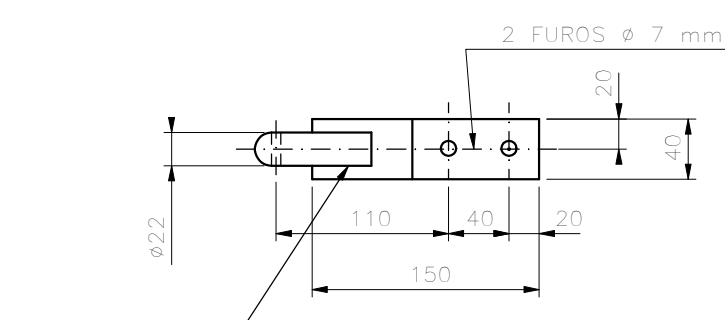
POS. 41  
ESC. 1:5



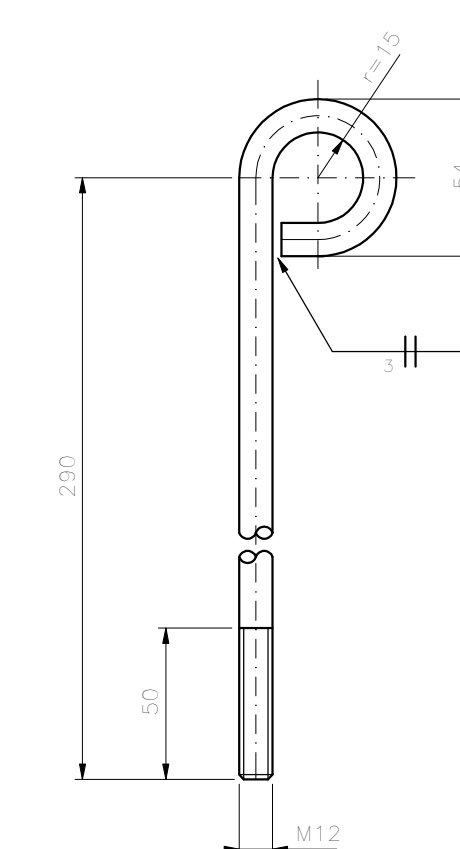
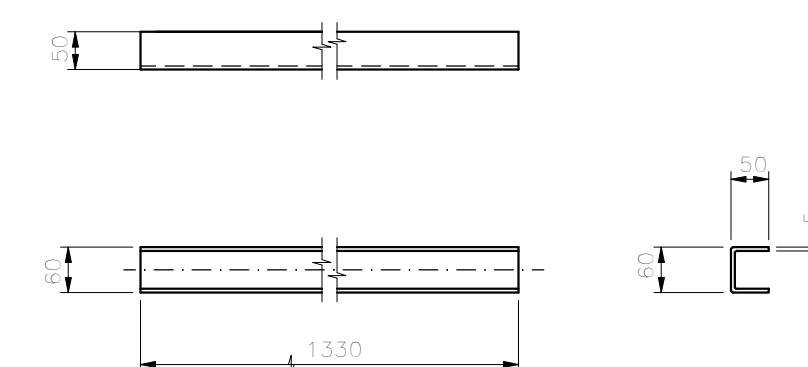
POS. 42  
ESC. 1:5



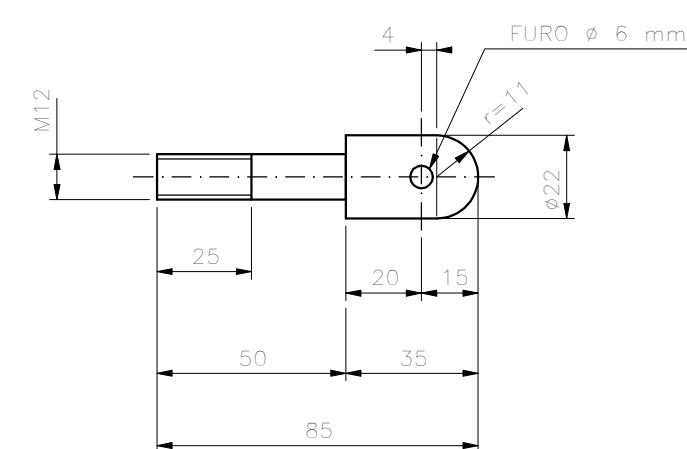
POS. 43  
ESC. 1:5



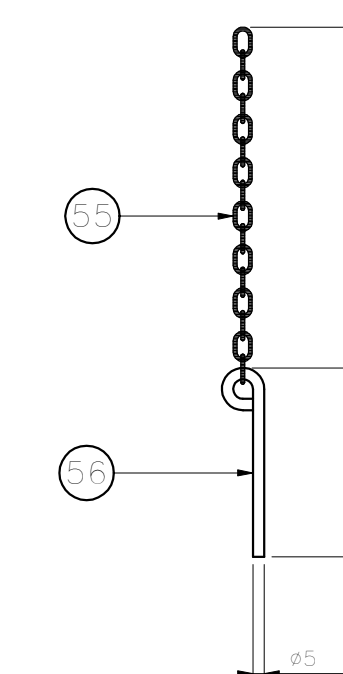
POS. 44  
ESC. 1:10



POS. 50  
ESC. 1:2,5



POS. 40  
ESC. 1:2



NOTAS  
1 - DIMENS~OES EM MIL~IMETRO , EXCETO ONDE INDICADO.  
2 - AS ROSCAS DEVEM APRESENTAR ACABAMENTO PERFEITO SEM FALHAS NOS FILETES OFERECENDO ACOPLAMENTO CORRETO ENTRE PEÇAS.  
3 - ESTE PROJETO DIGITALIZADO SUBSTITUI O ORIGINAL DE PRANCHETA.

PROJETO PADR~AO



COMPANHIA DE SANEAMENTO DE MINAS GERAIS  
P.127/0

ESCALA INDICADA  
FORM. A1

ASS. NOME COPASA	CREA	VISTO S/PEP MARIO ROZENBRUCH
PROJ. NORM. TECNICA	JOSE ROGERIO DOS SANTOS	APROV. DRM RUIRENS CACILHO DE MELLO
DES. VISTO D/VEA	LUIZ F. SILVESTRE	DATA
PROJECT		JANEIRO/2002

BERÇCO DE CILINDROS DE 50 kg  
DE CLORO EM CAMINH~AO  
- DETALHES DE PEÇAS -

N~UMERO  
FOLHA 04 DE 04

ORIGINAL ASSINADO NO ARQUIVO TECNICO